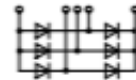


### 3~ Rectifier Bridges

#### 3~ Rectifier Bridges with Standard Diodes, B6U

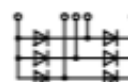


| Type   | $V_{RMS}$   | $V_{RMS}$  | $I_{AV}$ | @ $T_C$ | $I_{FSM}$<br>45°C<br>10 ms | $V_{FO}$ | $r_f$ | $T_{VJM}$ | $R_{thJC}$ | $R_{thJH}$ | Fig. No. | Package style                            |
|--|---|--|----------|---------|----------------------------|----------|-------|-----------|------------|------------|----------|--|
| ○ Not for new design<br>➤ New  | V   | V  | A        | °C      | A                          | V        | mΩ    | °C        | K/W        | K/W        |          | Outline drawings<br>on pages O-31...O-52 |
| FUO 22-12N<br>FUO 22-16N   | 1200<br>1600  | 400<br>500   | 30       | 120     | 150                        | 0.81     | 31.0  | 175       | 3.00       | 3.20       | X024a    | X024a <b>ISOPLUS 4-PAC™</b>              |
| VUO 22-08NO1<br>VUO 22-12NO1<br>VUO 22-14NO1<br>VUO 22-16NO1<br>VUO 22-18NO1   | 800<br>1200<br>1400<br>1600<br>1800                         | 250<br>400<br>440<br>500<br>575                      | 30       | 110     | 150                        | 0.84     | 28.0  | 150       | 2.50       | 2.90       | X103     | X025b <b>GUPP</b>                        |
| VUO 25-08NO8<br>VUO 25-12NO8<br>VUO 25-14NO8<br>VUO 25-16NO8<br>VUO 25-18NO8   | 800<br>1200<br>1400<br>1600<br>1800                         | 250<br>400<br>440<br>500<br>575                      | 20       | 85      | 380                        | 0.77     | 14.2  | 150       | 8.00       | 9.00       | X116a    | X101 <b>ECO-PAC 1</b>                    |
| VUO 28-08NO7<br>VUO 28-12NO7   | 800<br>1200   | 250<br>400   | 30       | 105     | 120                        | 0.84     | 28.8  | 150       | 2.50       | 2.90       | X101     | X116a <b>ECO-PAC 1</b>                   |
| VUO 36-08NO8<br>VUO 36-12NO8<br>VUO 36-14NO8<br>VUO 36-16NO8<br>VUO 36-18NO8   | 800<br>1200<br>1400<br>1600<br>1800                         | 250<br>400<br>440<br>500<br>575                      | 27       | 85      | 550                        | 0.76     | 9.1   | 150       | 7.00       | 8.00       | X116a    | See data sheet for pin arrangement       |
| VUO 34-08NO1<br>VUO 34-12NO1<br>VUO 34-14NO1<br>VUO 34-16NO1<br>VUO 34-18NO1   | 800<br>1200<br>1400<br>1600<br>1800                         | 250<br>400<br>440<br>500<br>575                      | 45       | 110     | 300                        | 0.81     | 14.9  | 150       | 1.70       | 2.10       | X103     | X103 <b>V1-A-Pack</b>                    |
| VUO 30-08NO3<br>VUO 30-12NO3<br>VUO 30-14NO3<br>VUO 30-16NO3<br>VUO 30-18NO3   | 800<br>1200<br>1400<br>1600<br>1800                         | 250<br>400<br>440<br>500<br>575                      | 45       | 110     | 300                        | 0.80     | 12.9  | 150       | 2.00       | 2.40       | X117b    | X116a <b>FO-B</b>                        |
| VUO 35-08NO7<br>VUO 35-12NO7<br>VUO 35-14NO7<br>VUO 35-16NO7<br>VUO 35-18NO7   | 800<br>1200<br>1400<br>1600<br>1800                         | 250<br>400<br>440<br>500<br>575                      | 35       | 85      | 400                        | 0.80     | 12.9  | 150       | 4.20       | 4.80       | X119a    | X117b <b>FO-F-B</b>                      |
| GUO 40-08NO1<br>GUO 40-12NO1<br>GUO 40-16NO1<br>➤ DMA 40U1800GU<br>➤ DNA 40U2200GU   | 800<br>1200<br>1600<br>1800<br>2200                         | 250<br>400<br>500<br>575<br>690                      | 40       | 90      | 370                        | 0.74     | 16.3  | 175       | 4.30       | 4.80       | X025b    | X119a <b>PWS-A</b>                       |
| FUO 50-16N<br>VUO 52-08NO1<br>VUO 52-12NO1<br>VUO 52-14NO1<br>VUO 52-16NO1<br>VUO 52-18NO1<br>VUO 52-20NO1<br>VUO 52-22NO1 | 1600<br>800<br>1200<br>1400<br>1600<br>1800<br>2000<br>2200 | 500<br>250<br>400<br>440<br>500<br>500<br>575<br>690 | 50       | 120     | 270                        | 0.78     | 17    | 175       | 2.10       | 2.30       | X024a    | X120a <b>PWS-B</b>                       |
| VUO 50-08NO3<br>VUO 50-12NO3<br>VUO 50-14NO3<br>VUO 50-16NO3<br>VUO 50-18NO3   | 800<br>1200<br>1400<br>1600<br>1800                         | 250<br>400<br>440<br>500<br>575                      | 60       | 110     | 500                        | 0.78     | 8.5   | 150       | 1.50       | 1.90       | X117b    |  |

Data according to IEC 60747 and refer to a single diode or thyristor unless otherwise stated.

### 3~ Rectifier Bridges

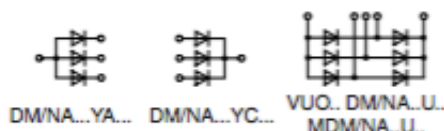
#### 3~ Rectifier Bridges with Standard Diodes, B6U



| Type                          | V <sub>RRM</sub> | V <sub>VRRMS</sub> | I <sub>SAV</sub> | @ T <sub>c</sub> | I <sub>FSM</sub><br>45°C<br>10<br>ms<br>A | V <sub>FD</sub> | r <sub>F</sub> | T <sub>VJM</sub> | R <sub>thJC</sub> | R <sub>thJH</sub> | Fig. No. | Package style   |
|-------------------------------|------------------|--------------------|------------------|------------------|---|-----------------|----------------|------------------|-------------------|-------------------|----------|---|
| ○ Not for new design<br>➤ New | V                | V                  | A                | °C               | A   | V               | mΩ             | °C               | K/W               | K/W               |          | Outline drawings on pages O-31...O-52                           |
| VUO 55-12NO7                  | 1200             | 400                | 60               | 85               | 750                                       | 0.76            | 6.9            | 150              | 2.70              | 3.10              | X120a    | X030a <b>SMPD-B</b><br>   |
| VUO 55-14NO7                  | 1400             | 440                |                  |                  |   |                 |                |                  |                   |                   |          |   |
| VUO 55-16NO7                  | 1600             | 500                |                  |                  |   |                 |                |                  |                   |                   |          |   |
| VUO 55-18NO7                  | 1800             | 575                |                  |                  |   |                 |                |                  |                   |                   |          |   |
| VUO 60-12NO3                  | 800              | 250                | 75               | 110              | 700                                       | 0.77            | 6.5            | 150              | 1.20              | 1.60              | X117b    | X101 <b>ECO-PAC 1</b><br>                                       |
| VUO 60-14NO3                  | 1400             | 440                |                  |                  |   |                 |                |                  |                   |                   |          |   |
| VUO 60-16NO3                  | 1600             | 500                |                  |                  |   |                 |                |                  |                   |                   |          |   |
| VUO 60-18NO3                  | 1800             | 575                |                  |                  |   |                 |                |                  |                   |                   |          |   |
| VUO 62-08NO7                  | 800              | 250                | 60               | 120              | 550                                       | 0.78            | 8.1            | 150              | 1.10              | 1.50              | X122a    | See data sheet for pin arrangement<br>X102 <b>ECO-PAC 2</b><br> |
| VUO 62-12NO7                  | 1200             | 400                |                  |                  |   |                 |                |                  |                   |                   |          |   |
| VUO 62-14NO7                  | 1400             | 440                |                  |                  |   |                 |                |                  |                   |                   |          |   |
| VUO 62-16NO7                  | 1600             | 500                |                  |                  |   |                 |                |                  |                   |                   |          |   |
| VUO 62-18NO7                  | 1800             | 575                |                  |                  |   |                 |                |                  |                   |                   |          |   |
| VUO 64-16NO7                  | 1600             | 500                | 60               | 120              | 550                                       | 0.78            | 8.1            | 150              | 1.10              | 1.50              | X122c    | See data sheet for pin arrangement                              |
| VUO 68-08NO7                  | 800              | 250                | 70               | 105              | 300                                       | 0.82            | 12.2           | 150              | 1.10              | 1.50              | X101     | X103 <b>V1-A-Pack</b><br>                                       |
| VUO 68-12NO7                  | 1200             | 400                |                  |                  |   |                 |                |                  |                   |                   |          |   |
| VUO 68-14NO7                  | 1400             | 440                |                  |                  |   |                 |                |                  |                   |                   |          |   |
| VUO 68-16NO7                  | 1600             | 500                |                  |                  |   |                 |                |                  |                   |                   |          |   |
| ○ VUO 70-16NO7                | 1600             | 500                | 70               | 100              | 550                                       | 0.80            | 8.0            | 150              | 1.45              | 1.90              | X118d    |   |
| VUO 80-08NO1                  | 800              | 250                | 80               | 110              | 600                                       | 0.81            | 7.8            | 150              | 1.10              | 1.40              | X103     | X117b <b>FO-F-B</b><br>   |
| VUO 80-12NO1                  | 1200             | 400                |                  |                  |   |                 |                |                  |                   |                   |          |   |
| VUO 80-14NO1                  | 1400             | 440                |                  |                  |   |                 |                |                  |                   |                   |          |   |
| VUO 80-16NO1                  | 1600             | 500                |                  |                  |   |                 |                |                  |                   |                   |          |   |
| VUO 80-18NO1                  | 1800             | 575                |                  |                  |   |                 |                |                  |                   |                   |          |   |
| VUO 82-08NO7                  | 800              | 250                | 90               | 115              | 750                                       | 0.78            | 6.0            | 150              | 0.90              | 1.30              | X122a    | X118d <b>FO-T-A</b><br>   |
| VUO 82-12NO7                  | 1200             | 400                |                  |                  |   |                 |                |                  |                   |                   |          |   |
| VUO 82-14NO7                  | 1400             | 440                |                  |                  |   |                 |                |                  |                   |                   |          |   |
| VUO 82-16NO7                  | 1600             | 500                |                  |                  |   |                 |                |                  |                   |                   |          |   |
| VUO 82-18NO7                  | 1800             | 575                |                  |                  |   |                 |                |                  |                   |                   |          |   |
| VUO 84-16NO7                  | 1600             | 500                | 90               | 115              | 750                                       | 0.78            | 6.0            | 150              | 0.90              | 1.30              | X122c    | X120a <b>PWS-B</b><br>  |
| VUO 86-08NO7                  | 600              | 125                | 90               | 105              | 550                                       | 0.81            | 7.8            | 150              | 0.90              | 1.30              | X101     | X121a <b>PWS-C</b><br>  |
| VUO 86-12NO7                  | 1200             | 400                |                  |                  |   |                 |                |                  |                   |                   |          |   |
| VUO 86-14NO7                  | 1400             | 440                |                  |                  |   |                 |                |                  |                   |                   |          |   |
| VUO 86-16NO7                  | 1600             | 500                |                  |                  |   |                 |                |                  |                   |                   |          |   |
| ➤ DMA 90U1800LB               | 1800             | 575                | 90               | 110              | 350                                       | 0.81            | 12.7           | 175              | 1.10              | 1.50              | X030a    | X122a <b>PWS-D</b><br>  |
| DNA 90U2200LB                 | 2200             | 690                |                  |                  |   |                 |                |                  |                   |                   |          |   |
| VUO 98-08NO7                  | 800              | 250                | 105              | 115              | 750                                       | 0.81            | 5.9            | 150              | 0.70              | 1.00              | X102     | X122c <b>PWS-D Flat</b><br>                                     |
| VUO 98-12NO7                  | 1200             | 400                |                  |                  |   |                 |                |                  |                   |                   |          |   |
| VUO 98-14NO7                  | 1400             | 440                |                  |                  |   |                 |                |                  |                   |                   |          |   |
| VUO 98-16NO7                  | 1600             | 500                |                  |                  |   |                 |                |                  |                   |                   |          |   |
| VUO 105-12NO7                 | 1200             | 400                | 120              | 105              | 1500                                      | 0.78            | 4.8            | 150              | 0.80              | 1.10              | X121a    |   |
| VUO 105-14NO7                 | 1400             | 440                |                  |                  |   |                 |                |                  |                   |                   |          |   |
| VUO 105-16NO7                 | 1600             | 500                |                  |                  |   |                 |                |                  |                   |                   |          |   |
| VUO 105-18NO7                 | 1800             | 575                |                  |                  |   |                 |                |                  |                   |                   |          |   |

### 3~ Rectifier Bridges

#### 3~ Rectifier Bridges with Standard Diodes, B6U



| Type                                 | $V_{RMS}$ | $V_{VRMS}$ | $I_{SAV}$ | $\Theta T_C$ | $I_{TSM}$<br>45°C<br>10 ms | $V_{FO}$ | $r_f$ | $T_{VM}$ | $R_{DJC}$ | $R_{DJH}$ | Fig. No. | Package style   |
|--------------------------------------|-----------|------------|-----------|--------------|----------------------------|----------|-------|----------|-----------|-----------|----------|---|
| ○ Not for new design<br>> New        | V         | V          | A         | °C           | A                          | V        | mΩ    | °C       | K/W       | K/W       |          | Outline drawings on pages O-31...O-52   |
| VUO 110-08NO7                        | 800       | 250        | 125       | 110          | 1200                       | 0.79     | 4.5   | 150      | 0.70      | 1.00      | X123c    | X027a <b>SOT-227B miniBLOC</b><br>                               |
| VUO 110-12NO7                        | 1200      | 400        |           |              |                            |          |       |          |           |           |          |   |
| VUO 110-14NO7                        | 1400      | 440        |           |              |                            |          |       |          |           |           |          |   |
| VUO 110-16NO7                        | 1600      | 500        |           |              |                            |          |       |          |           |           |          |   |
| VUO 110-18NO7                        | 1800      | 575        |           |              |                            |          |       |          |           |           |          |   |
| VUO 120-12NO2T                       | 1200      | 400        | 180       | 90           | 1100                       | 0.81     | 4.4   | 150      | 0.60      | 0.80      | X104     | X102 <b>ECO-PAC 2</b><br>  |
| VUO 120-16NO2T                       | 1600      | 500        |           |              |                            |          |       |          |           |           |          |   |
| VUO 121-16NO1                        | 1600      | 500        | 120       | 105          | 700                        | 0.80     | 7.6   | 150      | 0.65      | 0.75      | X112     | X121a <b>ECO-PAC 2</b><br><br>See data sheet for pin arrangement |
| VUO 122-08NO7                        | 800       | 250        | 125       | 115          | 1000                       | 0.80     | 4.6   | 150      | 0.60      | 0.90      | X102     |   |
| VUO 122-12NO7                        | 1200      | 400        |           |              |                            |          |       |          |           |           |          |   |
| VUO 122-14NO7                        | 1400      | 440        |           |              |                            |          |       |          |           |           |          |   |
| VUO 122-16NO7                        | 1600      | 500        |           |              |                            |          |       |          |           |           |          |   |
| VUO 125-12NO7                        | 1200      | 400        | 150       | 110          | 1800                       | 0.76     | 3.6   | 150      | 0.60      | 0.90      | X121a    | X121a <b>ECO-PAC 2</b><br><br>See data sheet for pin arrangement |
| VUO 125-14NO7                        | 1400      | 440        |           |              |                            |          |       |          |           |           |          |   |
| VUO 125-16NO7                        | 1600      | 500        |           |              |                            |          |       |          |           |           |          |   |
| VUO 125-18NO7                        | 1800      | 575        |           |              |                            |          |       |          |           |           |          |   |
| > DNA 90YA2200NA<br>> DNA 90YC2200NA | 2200      | 690        | 90        | 85           | 370                        | 0.86     | 11.4  | 150      | 1.20      | 1.30      | X027a    | X104 <b>V2-Pack</b><br>  |
| DMA 150YA1600NA<br>DMA 150YC1600NA   | 1600      | 500        | 150       | 95           | 700                        | 0.82     | 6.3   | 150      | 0.60      | 0.70      | X104     |   |
| VUO 160-08NO7                        | 800       | 250        | 175       | 110          | 1800                       | 0.77     | 3.4   | 150      | 0.50      | 0.70      | X123c    | X123c <b>E2-Pack</b><br>                                       |
| VUO 160-12NO7                        | 1200      | 400        |           |              |                            |          |       |          |           |           |          |   |
| VUO 160-14NO7                        | 1400      | 440        |           |              |                            |          |       |          |           |           |          |   |
| VUO 160-16NO7                        | 1600      | 500        |           |              |                            |          |       |          |           |           |          |   |
| VUO 160-18NO7                        | 1800      | 575        |           |              |                            |          |       |          |           |           |          |   |
| VUO 162-16NO7                        | 1600      | 500        | 175       | 110          | 1800                       | 0.77     | 3.4   | 150      | 0.50      | 0.70      | X123h    | X123h <b>E2-Pack</b><br>                                       |
| VUO 190-08NO7                        | 800       | 250        | 240       | 110          | 2800                       | 0.74     | 2.4   | 150      | 0.40      | 0.55      | X123c    |   |
| VUO 190-12NO7                        | 1200      | 400        |           |              |                            |          |       |          |           |           |          |   |
| VUO 190-14NO7                        | 1400      | 440        |           |              |                            |          |       |          |           |           |          |   |
| VUO 190-16NO7                        | 1600      | 500        |           |              |                            |          |       |          |           |           |          |   |
| VUO 190-18NO7                        | 1800      | 575        |           |              |                            |          |       |          |           |           |          |   |
| VUO 192-16NO7                        | 1600      | 500        | 240       | 110          | 2800                       | 0.74     | 2.4   | 150      | 0.40      | 0.55      | X123h    | X113 <b>E3-Pack</b><br>  |
| > MDNA 240U2200ED                    | 2200      | 690        | 240       | 90           | 1500                       | 0.79     | 5.1   | 150      | 0.35      | 0.45      | X112     |   |
| > MDMA 660U1600PTEH                  | 1600      | 500        | 660       | 85           | 5000                       | 0.77     | 1.8   | 150      | 0.15      | 0.23      | X113     |   |
| > MDNA 660U2200PTEH                  | 2200      | 690        |           |              |                            |          |       |          |           |           |          |   |
| > MDMA 900U1600PTEH                  | 1600      | 500        | 900       | 85           | 8000                       | 0.76     | 1.4   | 150      | 0.10      | 0.15      | X113     |   |

X123h **PWS-E Flat**



X123c **PWS-E**



X121a **PWS-C**

