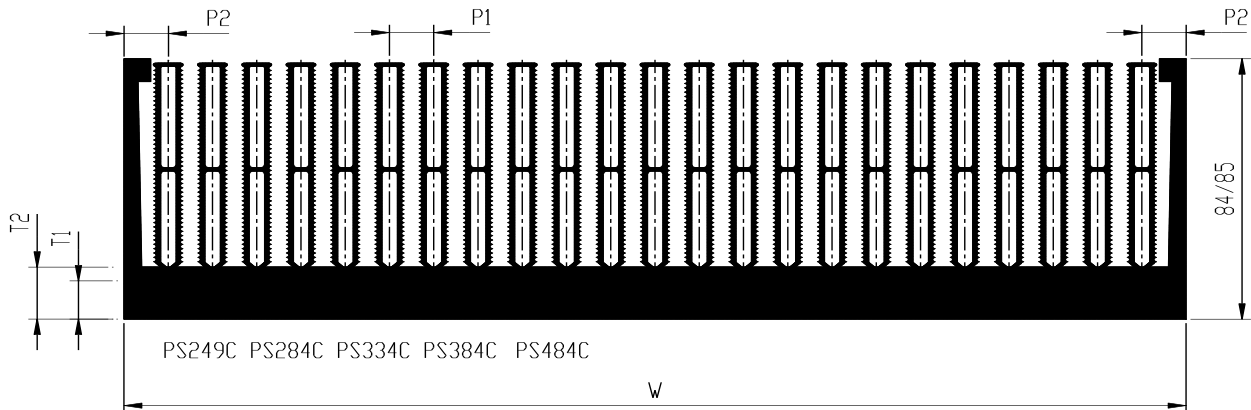


## High Efficiency Large Isolated Device Heatsinks

PS249C - PS284C - PS334C - PS384C - PS484C



Sink Ref,	W mm	No Fins	T1 mm	T2 mm	P1 mm	P2 mm	L mm Rth C/W	L mm Rth C/W	L mm Rth C/W	L mm Rth C/W	L mm Rth C/W
							100	200	300	400	500
PS249C	165	14	18	22	11	11	0.077	0.056	0.048		
									**		
PS284C	200	15	12	16	13	13	0.07	0.05	0.036	0.032	
									**		
PS334C	250	19	12	16	13	13	0.058	0.042	0.03	0.027	
PS384C	300	23	12	16	13	13	0.046	0.033	0.024	0.0227	0.0213
									**		
PS484C	400	31	16	20	13	13	0.036	0.026	0.019	0.0176	0.0165

\* Bare Aluminium. Large area heat source. 5m/s air velocity.  
Serrated fins assist in producing turbulence at higher air flow velocities.  
Which can further lower thermal impedance.

\*\* GD Fan cooling see Data Sheets PS249C-284C-384C/xxF

Thermal data for guideline only  
Full Data available on request

**GD Rectifiers Ltd.** Bentley House, William Way, Burgess Hill, West Sussex RH15 9AG.

**Tel: 01444 243452 Fax: 01444 870722**

**E-Mail: [enquiries@gdirectifiers.co.uk](mailto:enquiries@gdirectifiers.co.uk) Web Site: [www.gdirectifiers.co.uk](http://www.gdirectifiers.co.uk)**