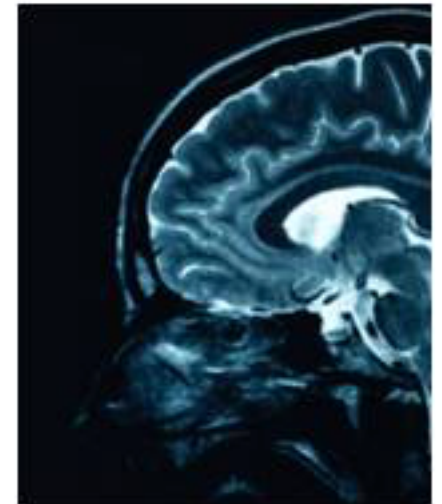




Switch Mode MOSFETs

Features:

- Laser driver, induction heating, switch mode power supplies & switching industrial apps
- HiperRF MOSFET is ideal for most applications
- Z-MOS MOSFET reduced capacitance = improved impedance & reduced driver design complexity
- Two package family options: industry standard (TO-247) & high performance DE Series



| Part Number | Division | BV _{DSS} | I _D (A) | R _{DS(ON)} | T _{R(ON)} (ns) | C _{iss} (pF) | C _{OSS} (pF) | C _{rss} (pF) | P _D (W) | Config | Package Style | Status |
|------------------------|--------------------------------|-------------------|--------------------|---------------------|-------------------------|-----------------------|-----------------------|-----------------------|--------------------|-----------|---------------|--------------------|
| <u>DE150-101N09A</u> | <u>IXYS</u> <u>COLORADO</u> | 100 | 9 | 0.16 | 4 | 800 | 200 | 30 | 200 | Single | 150 | Active Part |
| <u>DE275-101N30A</u> | <u>IXYS</u> <u>COLORADO</u> | 100 | 30 | 0.05 | 5 | 2500 | 500 | 100 | 270 | Single | 275 | Active Part |
| <u>DE150-201N09A</u> | <u>IXYS</u> <u>COLORADO</u> | 200 | 15 | 0.2 | 4 | 700 | 150 | 20 | 200 | Single | 150 | Active Part |
| <u>DE275-201N25A</u> | <u>IXYS</u> <u>COLORADO</u> | 200 | 25 | 0.08 | 5 | 2500 | 250 | 50 | 590 | Single | 275 | Active Part |
| <u>IXFH60N20F</u> | <u>IXYS</u> <u>COLORADO</u> | 200 | 60 | 0.038 | 14 | 2930 | 940 | 320 | 315 | Single | TO-247 AD | Phase out/Obsolete |
| <u>IXFT60N20F</u> | <u>IXYS</u> <u>COLORADO</u> | 200 | 60 | 0.038 | 14 | 2930 | 940 | 320 | 315 | Single | TO-268 | Phase out/Obsolete |
| <u>DE150-501N04A</u> | <u>IXYS</u> <u>COLORADO</u> | 500 | 4.5 | 1.5 | 4 | 700 | 90 | 5 | 200 | Single | 150 | Active Part |
| <u>IXFT12N50F</u> | <u>IXYS</u> <u>COLORADO</u> | 500 | 12 | 0.4 | 14 | 1870 | 290 | 90 | 180 | Single | TO-268 | Active Part |
| <u>IXFH12N50F</u> | <u>IXYS</u> <u>COLORADO</u> | 500 | 12 | 0.4 | 14 | 1870 | 290 | 90 | 180 | Single | TO-247 AD | Active Part |
| <u>DE275-501N16A</u> | <u>IXYS</u> <u>COLORADO</u> | 500 | 16 | 0.4 | 2 | 1800 | 150 | 40 | 590 | Single | 275 | Active Part |
| <u>DE275X2-501N16A</u> | <u>IXYS</u> <u>COLORADO</u> | 500 | 16 | 0.38 | 2 | 1800 | 150 | 45 | 1180 | push-pull | 275x2 | Active Part |
| <u>IXZR18N50A</u> | <u>IXYS</u> <u>COLORADO</u> | 500 | 19 | 0.325 | 4 | 1960 | 139 | 19 | - | Single | ISOPLUS2 47A | Active Part |
| <u>IXZ318N50</u> | <u>IXYS</u> <u>COLORADO</u> | 500 | 19 | 0.325 | 4 | 1960 | 139 | 19 | 880 | Single | DE375 | Active Part |
| <u>IXZ4DF18N50</u> | <u>IXYS</u> <u>COLORADO</u> | 500 | 19 | 0.29 | 3 | - | 139 | - | 500 | Module | 4DF | Phase out/Obsolete |
| <u>IXZR18N50B</u> | <u>IXYS</u> | 500 | 19 | 0.325 | 4 | 196 | 139 | 19 | - | Single | ISOPLUS2 | Active |

| | | | | | | | | | | | | |
|----------------------|--------------------------------|------|----|-------|----|----------|----------|------|------|--------|-----------------|---------------------------|
| | <u>COLORADO</u> | | | | | 0 | | | | | 47B | Part |
| <u>IXFH21N50F</u> | <u>IXYS</u> <u>COLORADO</u> | 500 | 21 | 0.25 | 12 | 260 0 | 470 | 160 | 300 | Single | TO-247 AD | Active Part |
| <u>IXFT21N50F</u> | <u>IXYS</u> <u>COLORADO</u> | 500 | 21 | 0.25 | 12 | 260 0 | 470 | 160 | 300 | Single | TO-268 | Active Part |
| <u>DE375-501N21A</u> | <u>IXYS</u> <u>COLORADO</u> | 500 | 25 | 0.22 | 3 | 200 0 | 200 | 45 | 940 | Single | 375 | Active Part |
| <u>IXFH28N50F</u> | <u>IXYS</u> <u>COLORADO</u> | 500 | 28 | 0.19 | 13 | 300 0 | 500 | 130 | 315 | Single | TO-247 AD | Phase out/Obso lete |
| <u>IXFT28N50F</u> | <u>IXYS</u> <u>COLORADO</u> | 500 | 28 | 0.19 | 13 | 300 0 | 500 | 130 | 315 | Single | TO-268 | Phase out/Obso lete |
| <u>DE475-501N44A</u> | <u>IXYS</u> <u>COLORADO</u> | 500 | 44 | 0.11 | 5 | 550 0 | 230 | 130 | 1800 | Single | 475 | Active Part |
| <u>IXFK44N50F</u> | <u>IXYS</u> <u>COLORADO</u> | 500 | 44 | 0.12 | 18 | 550 0 | 990 | 330 | 500 | Single | TO-264 | Phase out/Obso lete |
| <u>IXFX44N50F</u> | <u>IXYS</u> <u>COLORADO</u> | 500 | 44 | 0.12 | 18 | 550 0 | 990 | 330 | 500 | Single | PLUS247 | Phase out/Obso lete |
| <u>IXFN55N50F</u> | <u>IXYS</u> <u>COLORADO</u> | 500 | 55 | 0.085 | 20 | 670 0 | 125 0 | 330 | 600 | Single | SOT-227B | Active Part |
| <u>IXFK55N50F</u> | <u>IXYS</u> <u>COLORADO</u> | 500 | 55 | 0.085 | 20 | 670 0 | 125 0 | 330 | 560 | Single | TO-264 | Active Part |
| <u>IXFX55N50F</u> | <u>IXYS</u> <u>COLORADO</u> | 500 | 55 | 0.085 | 20 | 670 | 125 0 | 330 | 560 | Single | PLUS247 | Active Part |
| <u>IXZ316N60</u> | <u>IXYS</u> <u>COLORADO</u> | 600 | 18 | 0.44 | 4 | 193 0 | 125 | 17.8 | 880 | Single | DE375 | Active Part |
| <u>IXZR16N60B</u> | <u>IXYS</u> <u>COLORADO</u> | 600 | 18 | 0.44 | 4 | 193 0 | 125 | 17.8 | - | Single | ISOPLUS2 47B | Active Part |
| <u>IXZR16N60A</u> | <u>IXYS</u> <u>COLORADO</u> | 600 | 18 | 0.44 | 4 | 193 0 | 125 | 17.8 | - | Single | ISOPLUS2 47A | Active Part |
| <u>DE150-102N02A</u> | <u>IXYS</u> <u>COLORADO</u> | 1000 | 2 | 7.8 | 4 | 500 | 150 | 3 | 200 | Single | 150 | Active Part |

| | | | | | | | | | | | | |
|-----------------------------|--------------------------------|------|----|------|----|----------|-----|-----|------|---------------|--------------|---------------------------|
| <u>IXFH6N100F</u> | <u>IXYS</u> <u>COLORADO</u> | 1000 | 6 | 1.9 | 14 | 187 0 | 190 | 60 | 180 | Single | TO-247 AD | Active Part |
| <u>IXFT6N100F</u> | <u>IXYS</u> <u>COLORADO</u> | 1000 | 6 | 1.9 | 14 | 187 0 | 190 | 60 | 180 | Single | TO-268 | Active Part |
| <u>DE275-102N06A</u> | <u>IXYS</u> <u>COLORADO</u> | 1000 | 8 | 1.6 | 2 | 180 0 | 130 | 25 | 590 | Single | 275x2 | Active Part |
| <u>DE375-102N10A</u> | <u>IXYS</u> <u>COLORADO</u> | 1000 | 10 | 1.2 | 3 | 290 0 | 100 | 25 | 940 | Single | 375 | Active Part |
| <u>IXFT12N100F</u> | <u>IXYS</u> <u>COLORADO</u> | 1000 | 12 | 1.05 | 12 | 270 0 | 305 | 93 | 300 | Single | TO-247 AD | Active Part |
| <u>IXZ4DF12N100</u> | <u>IXYS</u> <u>COLORADO</u> | 1000 | 12 | 0.7 | 3 | - | 150 | - | 500 | Module | 4DF | Not for New Designs |
| <u>IXFH12N100F</u> | <u>IXYS</u> <u>COLORADO</u> | 1000 | 12 | 1.05 | 12 | 270 0 | 305 | 93 | 300 | Single | TO-247 AD | Active Part |
| <u>DE375-102N12A</u> | <u>IXYS</u> <u>COLORADO</u> | 1000 | 12 | 0.95 | 3 | 200 0 | 150 | 30 | 940 | Single | 375 | Active Part |
| <u>DE275X2- 102N06A</u> | <u>IXYS</u> <u>COLORADO</u> | 1000 | 16 | 0.8 | 2 | 180 0 | 130 | 25 | 1180 | push- pull | 275x2 | Active Part |
| <u>DE475-102N20A</u> | <u>IXYS</u> <u>COLORADO</u> | 1000 | 20 | 0.6 | 5 | 560 0 | 175 | 50 | 1800 | Single | 475 | Active Part |
| <u>IXFX21N100F</u> | <u>IXYS</u> <u>COLORADO</u> | 1000 | 21 | 0.5 | 16 | 550 0 | 640 | 190 | 500 | Single | PLUS247 | Active Part |
| <u>IXFK21N100F</u> | <u>IXYS</u> <u>COLORADO</u> | 1000 | 21 | 0.5 | 16 | 550 0 | 640 | 190 | 500 | Single | TO-264 | Active Part |
| <u>DE475-102N21A</u> | <u>IXYS</u> <u>COLORADO</u> | 1000 | 24 | 0.41 | 5 | 550 0 | 200 | 60 | 1800 | Single | 475 | Active Part |
| <u>IXFN24N100F</u> | <u>IXYS</u> <u>COLORADO</u> | 1000 | 24 | 0.39 | 18 | 660 0 | 760 | 230 | 600 | Single | TO-264 | Active Part |
| <u>IXFK24N100F</u> | <u>IXYS</u> <u>COLORADO</u> | 1000 | 24 | 0.39 | 18 | 660 0 | 760 | 230 | 560 | Single | TO-264 | Active Part |
| <u>IXFX24N100F</u> | <u>IXYS</u> <u>COLORADO</u> | 1000 | 24 | 0.39 | 18 | 660 0 | 760 | 230 | 560 | Single | PLUS247 | Active Part |
| <u>IXZ308N120</u> | <u>IXYS</u> <u>COLORADO</u> | 1200 | 8 | 2.1 | 5 | 196 0 | 59 | 9.2 | 880 | Single | DE375 | Active Part |

| | | | | | | | | | | | | |
|--------------------|--------------------------------|------|---|-----|---|----------|----|-----|---|--------|-----------------|----------------|
| <u>IXZR08N120A</u> | <u>IXYS</u> <u>COLORADO</u> | 1200 | 8 | 2.1 | 5 | 196 0 | 59 | 9.2 | - | Single | ISOPLUS2 47A | Active Part |
| <u>IXZR08N120B</u> | <u>IXYS</u> <u>COLORADO</u> | 1200 | 8 | 2.1 | 5 | 196 0 | 59 | 9.2 | - | Single | ISOPLUS2 47B | Active Part |

GD Rectifiers Ltd. Bentley House, 2 William Way, Burgess Hill, West Sussex RH15 9AG.

Tel: 01444 243452 Fax: 01444 870722

Email: enquiries@gdirectifiers.co.uk Website: www.gdirectifiers.co.uk