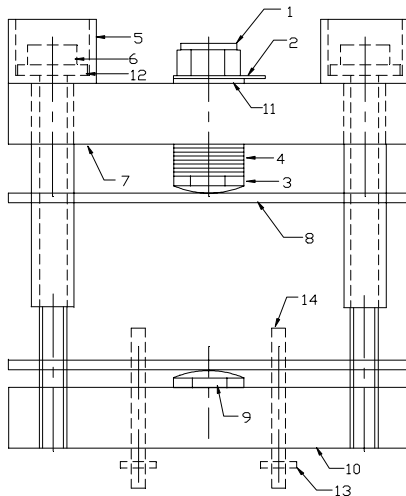


## Capsule Device Clamping Instructions

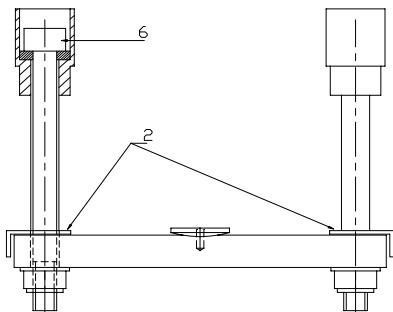


### Centre spring stack style

Tighten bolts (6) evenly & sequentially

When correct force is applied  
Indicator (2) just becomes loose.

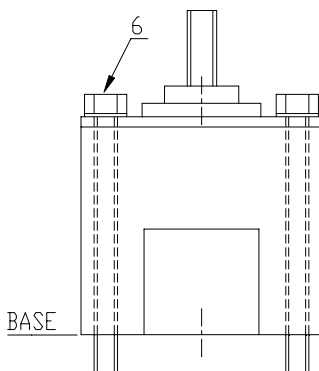
Never adjust spring nut (1)  
This is factory set to the correct pressure.



### Spring Bar style

Tighten bolts (6) evenly & sequentially

When correct force is applied  
Indicators (2) just contact heatsink.



### Box Clamp style

Tighten bolts (6) evenly & sequentially

When correct force is applied  
Base just contacts heatsink.

The **GD Rectifier** range of clamps require no special tools.  
Never over tighten clamps as damage may occur.  
Check you have the correct clamp force for your application  
**See EI0003 for device mounting area preparation**

**GD Rectifiers Ltd.** Victoria Gardens, Burgess Hill, West Sussex RH15 9NB.

**Tel: 01444 243452 Fax: 01444 870722**

**E-Mail: [enquiries@gdirectifiers.co.uk](mailto:enquiries@gdirectifiers.co.uk) Web Site: [www.gdirectifiers.co.uk](http://www.gdirectifiers.co.uk)**