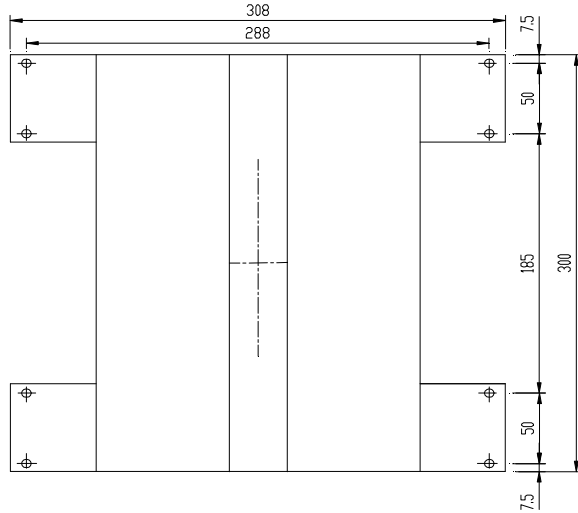
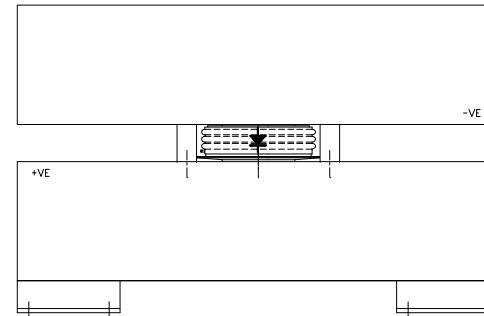
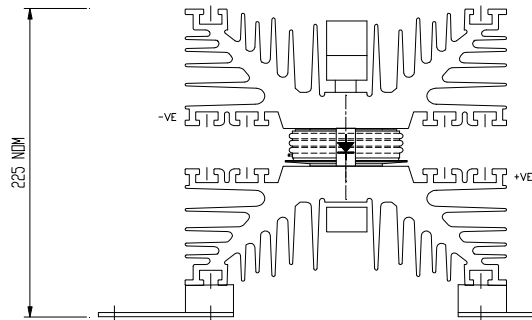


DRG.No.B 020775

POWERSEM LTD.



CONNECTIONS M8 CHANNELS.
FIXINGS 8 x M6



TOLERANCES UNLESS SPECIFIED
UNLIMITED DIMENSIONS TO BE ± 0.2
ANGLES ± 0° 30°
HOLES + 0.1 - 0.02

REMOVE SHARP EDGES
ALL DIMENSIONS IN MILLIMETRES
CHAMFER ALL THREADS AT 45 TO
ROOT DIAMETER.

POWERSEM LTD OWNS THE COPYRIGHT OF THIS DRAWING WHICH IS
SUPPLIED IN CONFIDENCE AND WHICH MUST NOT BE USED FOR ANY PURPOSE OTHER THAN
THAT FOR WHICH IT IS SUPPLIED, AND MUST NOT BE REPRODUCED WITHOUT PERMISSION
IN WRITING FROM THE OWNERS. © POWERSEM LTD.

TITLE: E1U-SWxxCXCxxC 2PS286/300B

JOB:

MAT'L:

SPEC.

FINISH:

SCALE 1:3

DRAWN PB

CHK'D MP

MOD. No

ISSUE No 1/26.10.01

DRG.No.B 020775

ASSEMBLY DN:
ASSEMBLY DN

THIRD ANGLE PROJECTION