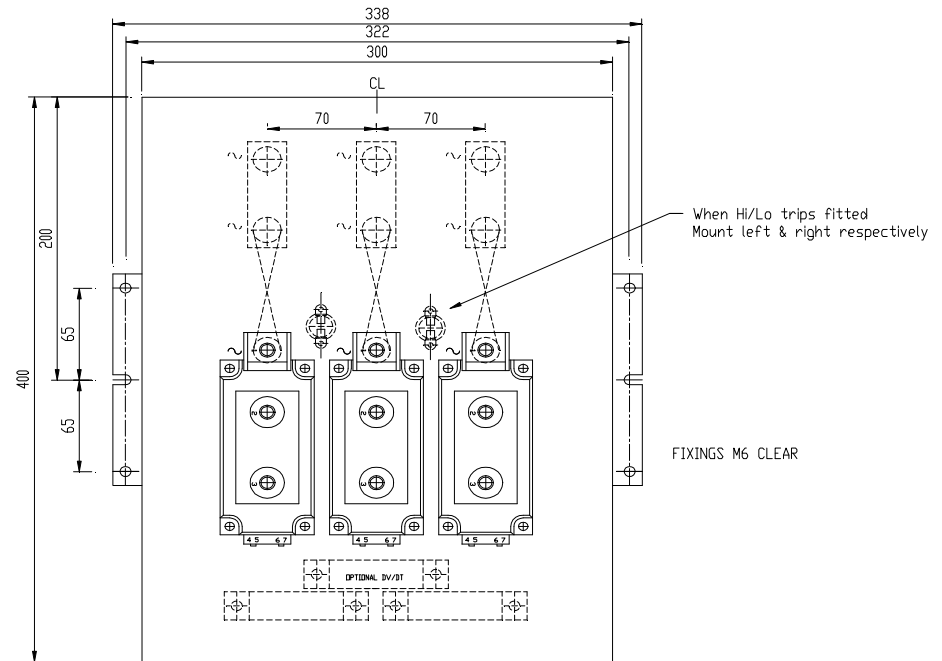
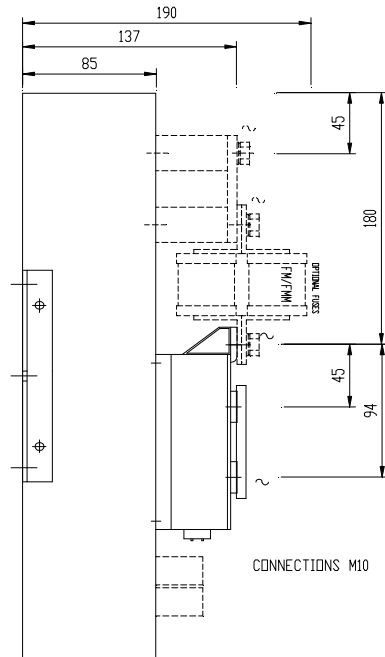


DRG.No.B 020995

POWERSEM LTD.



FOR W2C OMIT CTR PHASE
FOR W3H USE MCD/xx

<p>TOLERANCES UNLESS SPECIFIED UNLIMITED DIMENSIONS TO BE ± 0.2 ANGLES $\pm 0^\circ - 30^\circ$ HOLES $+ 0.1 - 0.02$</p>	<p>REMOVE SHARP EDGES ALL DIMENSIONS IN MILLIMETRES CHAMFER ALL THREADS AT 45 TO ROOT DIAMETER.</p>	<p>POWERSEM LTD OWNS THE COPYRIGHT OF THIS DRAWING WHICH IS SUPPLIED IN CONFIDENCE AND WHICH MUST NOT BE USED FOR ANY PURPOSE OTHER THAN THAT FOR WHICH IT IS SUPPLIED, AND MUST NOT BE REPRODUCED WITHOUT PERMISSION IN WRITING FROM THE OWNERS. © POWERSEM LTD.</p>	<p>TITLE: W3C MCC500/xx PS385/400B</p>				<p>JOB:</p>	
			<p>MAT'L:</p>		<p>SPEC.</p>			
			<p>FINISH:</p>	<p>SCALE 1:3</p>	<p>DRAWN PB</p>	<p>CHK'D MP</p>	<p>DRG.No.B 020995</p>	
			<p>MOD. No</p>					
			<p>ISSUE No</p>	<p>1/17.06.04</p>				

ASSEMBLY ON:
ASSEMBLY ON

THIRD ANGLE PROJECTION