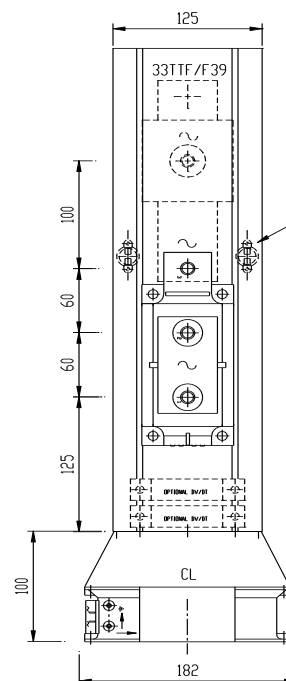
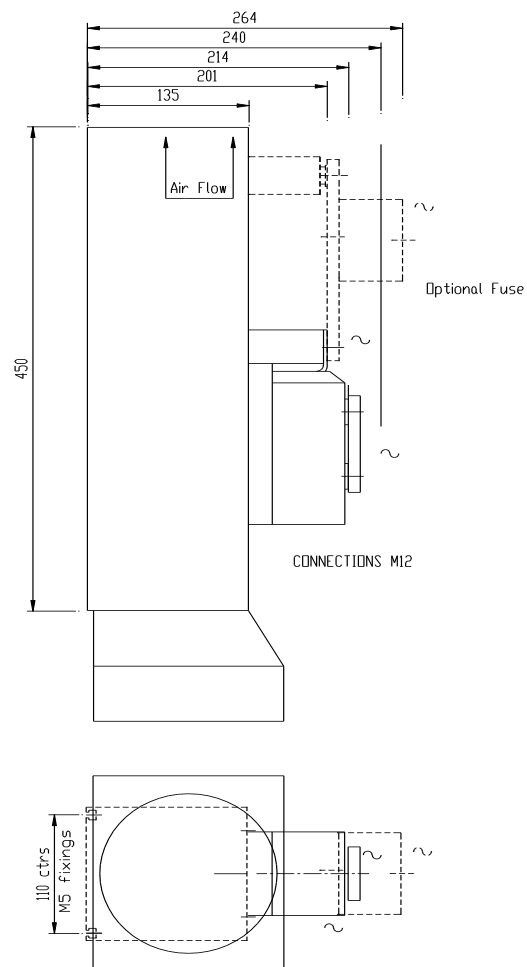


DRG.No.B 020957

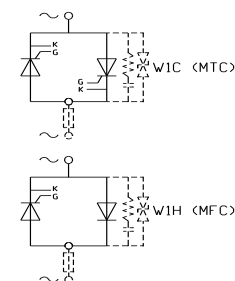
POWERSEM LTD.



Device Mtg Holes M8 x 10mm deep min full thread
7-8Nm. Holes must not break through.
Connections M12 / M12 clear. 12Nm

When Hi/Lo trips fitted
Mount left & right respectively

Fixing via M5 rear channels
Connections M12
FOR W1C USE MTC/xx
FOR W1H USE MFC/xx
FOR W3H / W3C USE 3 OFF



FUSES, DV/DT, THERMAL TRIPS OPTIONAL.
BUSBARS 50x10mm

TOLERANCES UNLESS SPECIFIED
UNLIMITED DIMENSIONS TO BE ± 0.2
ANGLES $\pm 0^\circ 30'$
HOLES $+0.1 -0.02$

REMOVE SHARP EDGES
ALL DIMENSIONS IN MILLIMETRES
CHAMFER ALL THREADS AT 45 TO
ROOT DIAMETER.

POWERSEM LTD OWNS THE COPYRIGHT OF THIS DRAWING WHICH IS
SUPPLIED IN CONFIDENCE AND WHICH MUST NOT BE USED FOR ANY PURPOSE OTHER THAN
THAT FOR WHICH IT IS SUPPLIED, AND MUST NOT BE REPRODUCED WITHOUT PERMISSION
IN WRITING FROM THE OWNERS. © POWERSEM LTD.

TITLE: W1C/H Mxx1200 PS260/450B6F

JOB:

MATERIAL

SPEC.

FINISH: CLEAN

SCALE: 1:4

DRAWN: PB

CHK'D: MP

MOD. No

ISSUE No 1/09.04.21

DRG.No.B 020957

ASSEMBLY ON:
ASSEMBLY ON:

THIRD ANGLE PROJECTION