

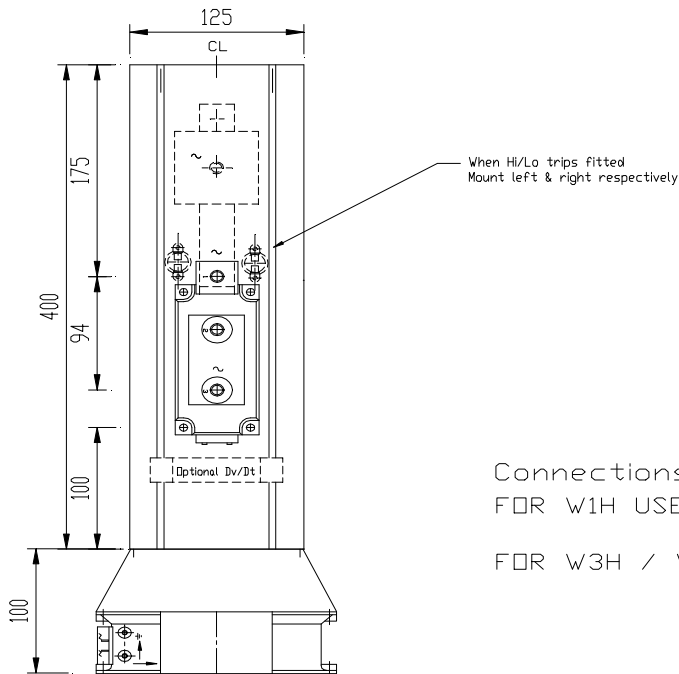
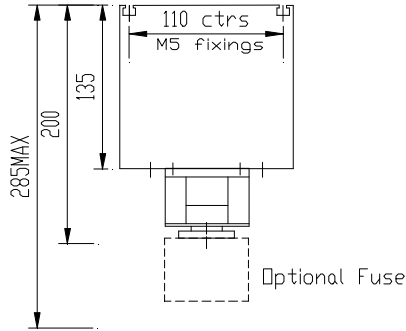
POWERSEM LTD.

DRG.No.A 020956

POWERSEM LTD, OWNS THE COPYRIGHT OF THIS DRAWING WHICH IS SUPPLIED IN CONFIDENCE AND WHICH MUST NOT BE USED FOR ANY PURPOSE OTHER THAN THAT FOR WHICH IT IS SUPPLIED, AND MUST NOT BE REPRODUCED WITHOUT PERMISSION IN WRITING FROM THE OWNERS.

THIRD ANGLE PROJECTION

© POWERSEM LTD



Connections M10
FOR W1H USE MCD/xx
FOR W3H / W3C USE 3 OFF

TOLERANCES UNLESS SPECIFIED

UNLIMITED DIMENSIONS TO BE ± 0.2
ANGLES $\pm 0^{\circ} 30'$
HOLES $+ 0.1 - 0.02$

REMOVE SHARP EDGES
ALL DIMENSIONS IN MILLIMETRES
CHAMFER ALL THREADS AT 45 TO ROOT DIAMETER.

ASSEMBLY DN:

TITLE: W1C MCC500 PS260/400B6F

JOB:

MAT'L:

SPEC.

FINISH:

SCALE 1:5

DRAWN P/B

CHK'D MP

MOD. No

ISSUE No

1/07.07.12

DRG.No.A 020956