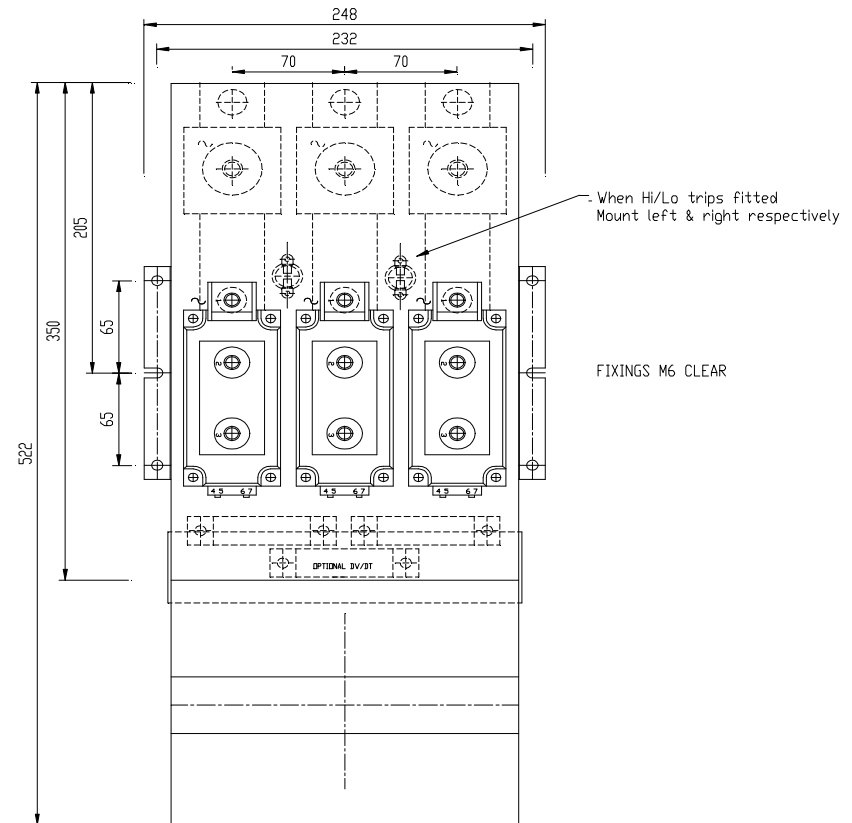
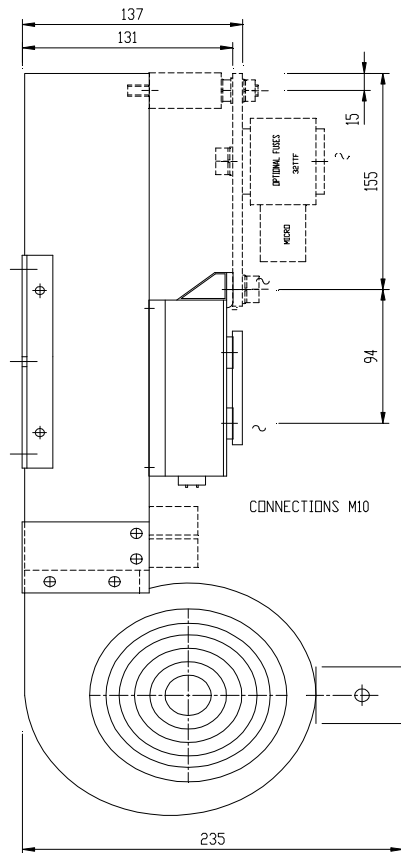


DRG.No.B 020946

POWERSEM LTD.



FOR W3H USE MCD/xx  
FOR W2C/H OMIT CTR PHASE

TOLERANCES UNLESS SPECIFIED UNLIMITED DIMENSIONS TO BE $\pm 0.2$ ANGLES $\pm 0^{\circ} 30'$ HOLES $+ 0.1 - 0.02$				REMOVE SHARP EDGES ALL DIMENSIONS IN MILLIMETRES CHAMFER ALL THREADS AT 45 TO ROOT DIAMETER.				POWERSEM LTD OWNS THE COPYRIGHT OF THIS DRAWING WHICH IS SUPPLIED IN CONFIDENCE AND WHICH MUST NOT BE USED FOR ANY PURPOSE OTHER THAN THAT FOR WHICH IT IS SUPPLIED, AND MUST NOT BE REPRODUCED WITHOUT PERMISSION IN WRITING FROM THE OWNERS. © POWERSEM LTD.				TITLE: W3C MCC500/xx PS292/350BF						JOB:					
												MAT'L:						SPEC.					
												FINISH:						SCALE 1:3		DRAWN PB		CHK'D MP	
								ASSEMBLY DN:				MOD. No										DRG.No.B 020946	
								THIRD ANGLE PROJECTION				ISSUE No						1/01.06.04					

1. The first part of the document is a list of the names of the members of the committee.

2.

3.

4.

5.

6.

7.

8.

9.

10.

11.

12.

13.

14.

15.

16.

17.

18.



