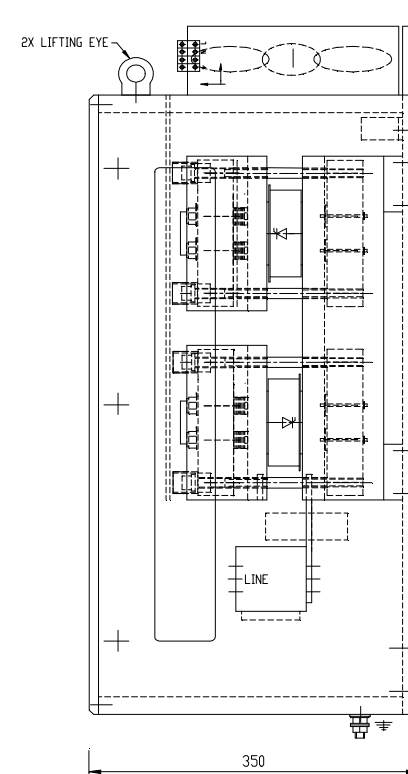
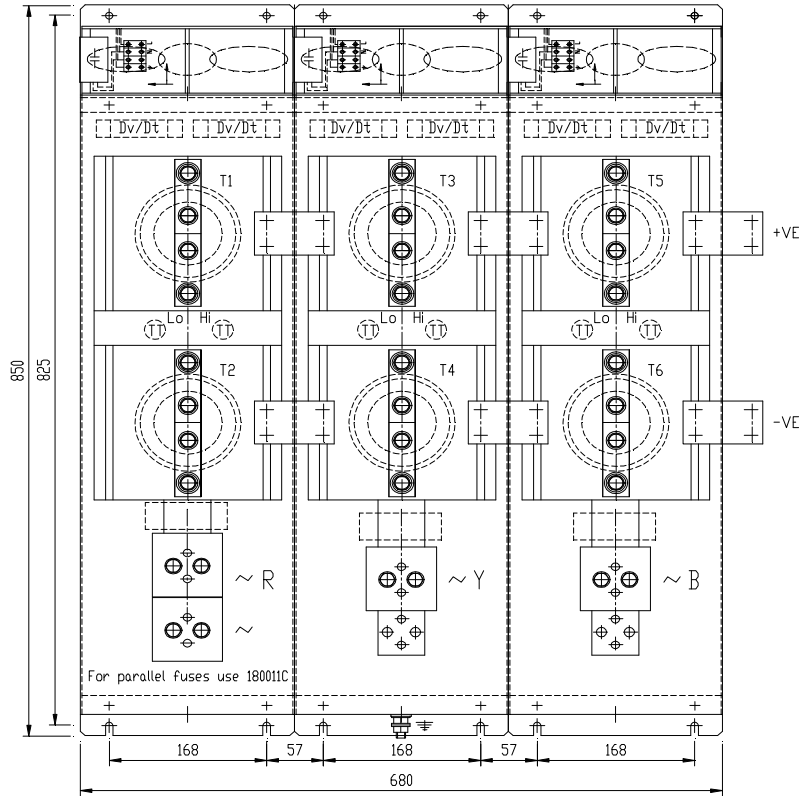
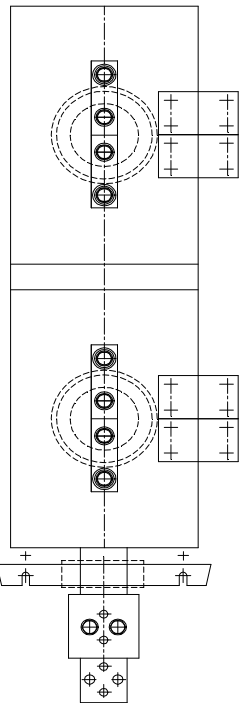


PS286/630/300BF MAY BE FITTED
FUSES ARE OUTBOARD OF THE ASSY.



MOUNTING 4*MB PER PHASE
CONNECTION HOLES M8 CLEAR
G/K LEADS 1000mm
FUSES, CT, TT ETC OPTIONAL.
SEE CIRCUIT DIAGRAM 300330

TOLERANCES UNLESS SPECIFIED
UNLIMITED DIMENSIONS TO BE ± 0.2
ANGLES ± 0° - 30°
HOLES ± 0.1 - 0.02

REMOVE SHARP EDGES
ALL DIMENSIONS IN MILLIMETRES
CHAMFER ALL THREADS AT 45 TO
ROOT DIAMETER.

POWERSEM LTD OWNS THE COPYRIGHT OF THIS DRAWING WHICH IS
SUPPLIED IN CONFIDENCE AND WHICH MUST NOT BE USED FOR ANY PURPOSE OTHER THAN
THAT FOR WHICH IT IS SUPPLIED, AND MUST NOT BE REPRODUCED WITHOUT PERMISSION
IN WRITING FROM THE OWNERS.
© POWERSEM LTD.

TITLE: B6C-GDTxx/x PS286/400/180BF

MAT'L:

FINISH:

MDD. No

ISSUE No

SCALE 1:5

JOB:

SPEC.

DRAWN PB

CHK'D MP

ASSEMBLY DN:
ASSEMBLY ON

THIRD ANGLE PROJECTION

1/30.01.07

DRG.No.B 020330

