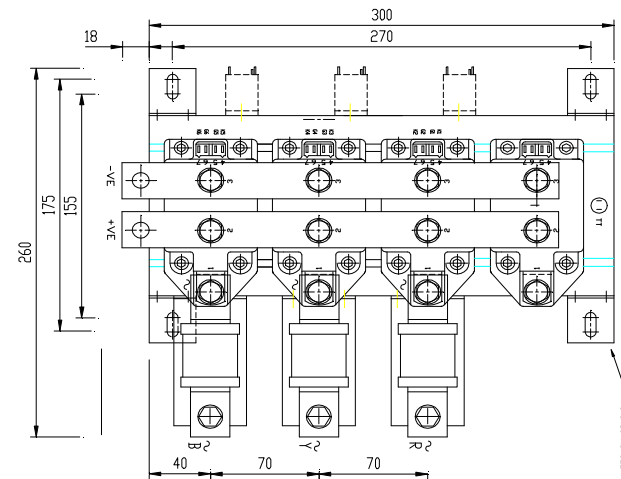
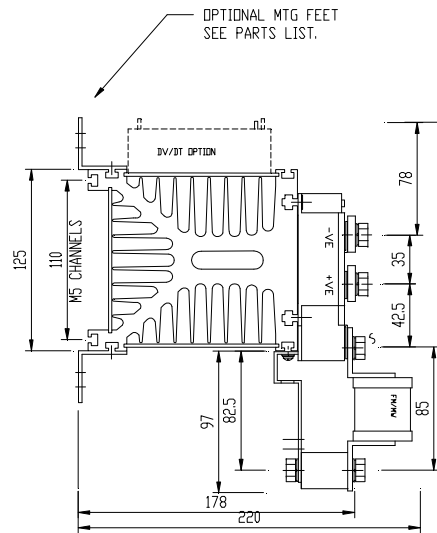
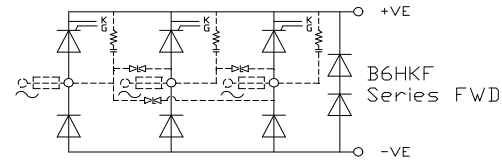


DRG.No.B 020064B3

POWERSEM LTD.



CONNECTIONS AC M8, DC M10

FUSES, DV/DT, THERMAL TRIPS. MTG FEET OPTIONAL.

FOR B6C-F USE MCC DEVICES

TOLERANCES UNLESS SPECIFIED UNLIMITED DIMENSIONS TO BE ± 0.2 ANGLES $\pm 0^\circ 30'$ HOLES $+ 0.1 - 0.02$	REMOVE SHARP EDGES ALL DIMENSIONS IN MILLIMETRES CHAMFER ALL THREADS AT 45 TO ROOT DIAMETER.	POWERSEM LTD OWNS THE COPYRIGHT OF THIS DRAWING WHICH IS SUPPLIED IN CONFIDENCE AND WHICH MUST NOT BE USED FOR ANY PURPOSE OTHER THAN THAT FOR WHICH IT IS SUPPLIED, AND MUST NOT BE REPRODUCED WITHOUT PERMISSION IN WRITING FROM THE OWNERS. POWERSEM LTD.	TITLE: B6C/HK-F MCD MDD 220-310 PS260/300B	JOB:
MATERIAL:			SCALE 1:3	SPEC.
FINISH:			SCALE 1:3	DRAWN PB
MOD. No			SCALE 1:3	CHK'D MP
ISSUE No			1/04.09.05	DRG.No.B 020064B3

ASSEMBLY ON
ASSEMBLY ON

THIRD ANGLE PROJECTION

[illegible]