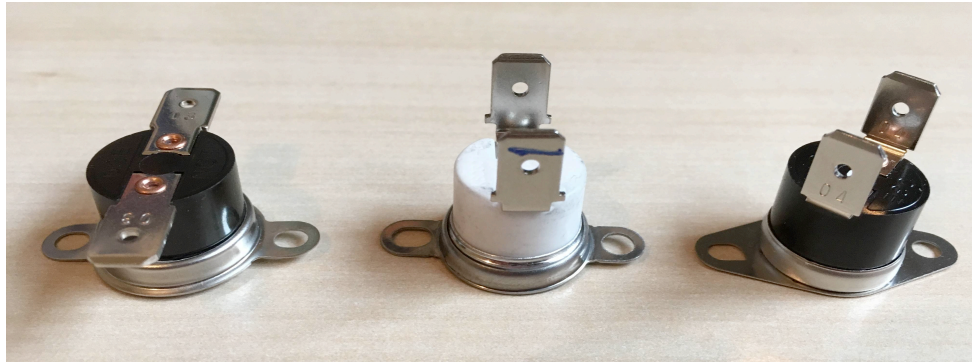


Thermal Trips



GD Rectifiers offer a range of surface mount Bimetallic thermal trips for protection of power semiconductors against over temperature. Ranging from 40-230°C to suit many applications and mountings, heaters, cooling fans, heatsinks etc.

Formats

Contacts Closed, open on rise. Contacts Open, close on rise.

Operational Tolerance. Up to 120°C=3°C, 150°C=5°C, 190°C=7°C, 230°C=10°C. Typical values.

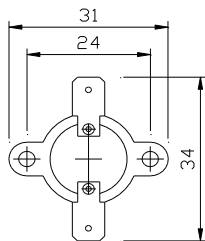
Reset Differential. Up to 120-10°C, 150-15°C, 190-20°C, 230-30°C. Typical values.

Approvals VDE, UL, CSA.

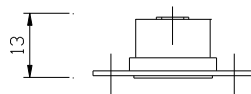
Cycles 100,000 @ 10A 10,000 @ 16A. Contact resistance 30ohms. Dielectric strength 1500Vac 1 minute.

Insulation resistance 1Mohm min @500Vdc. Contact rating SPST 16A 250Vac. 15A 125Vac resistive.

Body material: Phenolic to 150°C, Polyester/Bio glass to 170°C, Ceramic 175-230°C. Fixing brackets Stainless Steel.

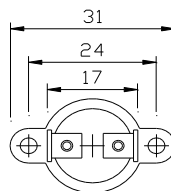


Connection Horizontal
 2x 6.3x0.8mm fast on.

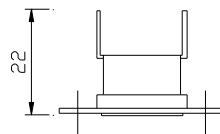


2 M3 FIXING
 (Rotational)

Style 550014-xx
Contacts Closed

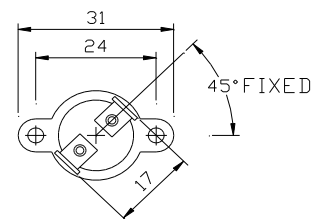


Connection Vertical
 2x 6.3x0.8mm fast on.

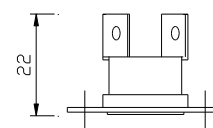


2 M3 FIXING
 (Rotational)

Style 550015-xx
Contacts Closed



Connection Vertical
 2x 6.3x0.8mm fast on.



2 M3 FIXING

Style 550016-xx
Contacts Open

***We have many temperature ratings and configurations in stock.
 Contact our sales office for your requirements.***